

dkPOWER type S 6 bar series, 0.6-100 tons

dkPOWER tip S 6 bar serisi, 0.6-100 ton

type S

Total strokes : 50-400mm
Power strokes : 5-40mm
Force : 0.5-100 ton
Operating pressure : 2-6 bar
Special execution : Full forced reached with 6 bar operating pressure
Max güce 6 bar'lık hava basıncında ulaşır

typ S

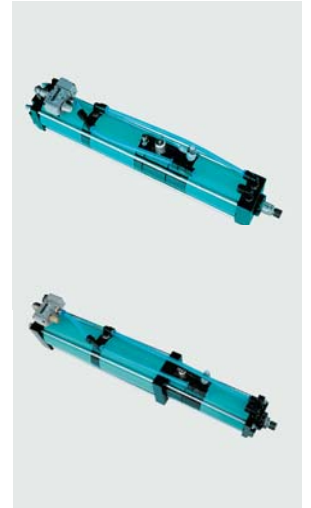
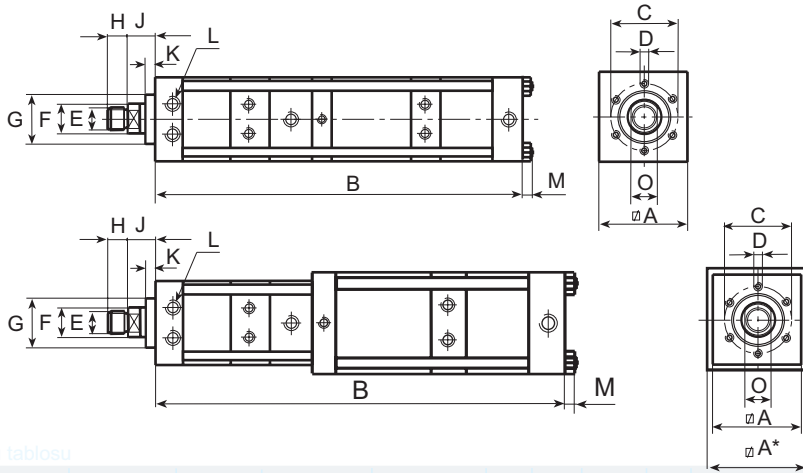
Toplam strok : 50-400mm
Güç stroğu : 5-40mm
Kuvvet : 0.5-100 ton
Operasyon basıncı : 2-6 bar
Özel uygulama basıncı : Full forced reached with 6 bar operating pressure
Max güce 6 bar'lık hava basıncında ulaşır

Sample order / Sipariş örneği

06 S01 - 100 - 10

Power stroke → Güç stroğu
Total stroke → Toplam strok
Type → Tip
Max.working pressure → Max.çalışma basıncı

Power stroke limitation (optional) → Güç stroğu kısıtlaması (opsiyonel)



Measurements in mm / Ölçüler mm dir

Genel ölçü tablosu

Type	Total Stroke	power stroke	max.force	fast approach force	retracting force	A	A*	B	C	D	E	F	G	H	J	K	L	M	N	O
Tip	Toplam strok	Güç stroğu	max.kuvvet (daN)	Hızlı ilerleme stroğu (daN)	Ger dönüş kuvveti (daN)															
	mm	mm																		
06 S01	50	6	670	55	58	50		437	40	6XM 6X12	M12X1.5	16	30	12	24	10	G1/8"			14
06 S01	50	12	600	55	58	60		474	40	6XM 6X12	M12X1.5	16	30	12	24	10	G1/8"			14
06 S01	100	6	670	55	58	50		577	40	6XM 6X12	M12X1.5	16	30	12	24	10	G1/8"			14
06 S01	100	12	600	55	58	60		800	40	6XM 6X12	M12X1.5	16	30	12	24	10	G1/8"			14
06 S02	50	6	1050	83	97	60		498	40	6XM 6X12	M12X1.5	16	30	12	24	10	G1/8"			14
06 S02	50	12	1070	83	97	70		498	40	6XM 6X12	M12X1.5	16	30	12	24	10	G1/8"			14
06 S02	100	6	1050	83	97	60		644	40	6XM 6X12	M12X1.5	16	30	12	24	10	G1/8"			14
06 S02	100	12	1070	83	97	70		628	40	6XM 6X12	M12X1.5	16	30	12	24	10	G1/8"			14
06 S02	150	6	1050	83	97	60		790	40	6XM 6X12	M12X1.5	16	30	12	24	10	G1/8"			14
06 S02	150	12	1070	83	97	70		758	40	6XM 6X12	M12X1.5	16	30	12	24	10	G1/8"			14
06 S03	50	6	1810	144	154	70		488	54	6XM 8X12	M16X1.5	20	40	15	26	10	G1/4"			17
06 S03	50	12	1660	144	154	70	85	530	54	6XM 8X12	M16X1.5	20	40	15	26	10	G1/4"		205	17
06 S03	70	25	1660	144	154	70	85	663	54	6XM 8X12	M16X1.5	20	40	15	26	10	G1/4"		245	17
06 S03	100	6	1810	144	154	70		620	54	6XM 8X12	M16X1.5	20	40	15	26	10	G1/4"			17
06 S03	100	12	1660	144	154	70	85	652	54	6XM 8X12	M16X1.5	20	40	15	26	10	G1/4"		305	17
06 S03	100	25	1660	144	154	70	85	734	54	6XM 8X12	M16X1.5	20	40	15	26	10	G1/4"		305	17
06 S03	100	40	2000	144	154	70	110	760	54	6XM 8X12	M16X1.5	20	40	15	26	10	G1/4"		305	17
06 S03	150	6	1810	144	154	70		752	54	6XM 8X12	M16X1.5	20	40	15	26	10	G1/4"			17
06 S03	150	12	1660	144	154	70	85	774	54	6XM 8X12	M16X1.5	20	40	15	26	10	G1/4"		405	17
06 S03	150	25	1660	144	154	70	85	856	54	6XM 8X12	M16X1.5	20	40	15	26	10	G1/4"		405	17
06 S03	150	40	2000	144	154	70	110	872	54	6XM 8X12	M16X1.5	20	40	15	26	10	G1/4"		405	17
06 S03	150	50	2000	144	154	70	110	916	54	6XM 8X12	M16X1.5	20	40	15	26	10	G1/4"		405	1
06 S03	200	6	1810	144	154	70		884	54	6XM 8X12	M16X1.5	20	40	15	26	10	G1/4"			7
06 S03	200	12	1660	144	154	70	85	896	54	6XM 8X12	M16X1.5	20	40	15	26	10	G1/4"		505	17
06 S03	200	25	1660	144	154	70	85	979	54	6XM 8X12	M16X1.5	20	40	15	26	10	G1/4"		505	17
06 S03	200	40	2000	144	154	70	110	984	54	6XM 8X12	M16X1.5	20	40	15	26	10	G1/4"		505	17
06 S03	200	60	2000	144	154	70	110	1071	54	6XM 8X12	M16X1.5	20	40	15	26	10	G1/4"		505	17
06 S03	250	60	2000	144	154	70	110	1183	54	6XM 8X12	M16X1.5	20	40	15	26	10	G1/4"		605	17



The power is stated ± 5% Güç değişimi ± 5%

DK OTOMASYON Ltd. Şti. Head office: Gazlıca cad. No:62/B 16220 Bursa •TURKEY Tel: +90.224. 444 00 75 Fax: +90.224. 253 06 90

dkPOWER type S 6 bar series, 0.6-100 tons

dkPOWER tip S 6 bar serisi, 0.6-100 ton

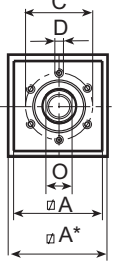
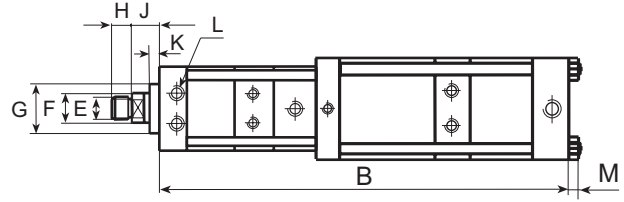
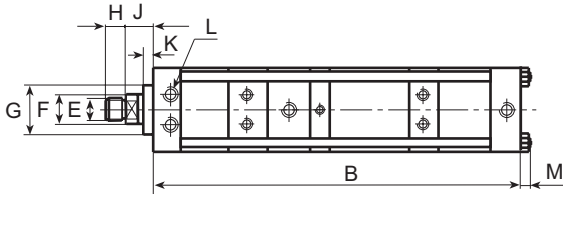


Table general dimensions
Genel ölçü tablosu

Measurements in mm / Ölçüler mm dir

Type	Total Stroke	power stroke	max force	fast approach force	retracting force															
Tip	Toplam strok	Güç stroğu	max kuvvet	Hızlı ilerleme stroğu	Geri dönüş kuvveti	A	A"	B	C	D	E	F	G	H	J	K	L	M	N	O
	mm	mm	(daN)	(daN)	(daN)															
06 S04	50	6	3330	187	200	85		563	64	6XM 8X15	M22X2	30	50	20	28.5	10	G3/8"			24
06 S04	50	12	3330	187	200	85		641	64	6XM 8X15	M22X2	30	50	20	28.5	10	G3/8"			24
06 S04	70	25	4070	187	200	90	110	767	64	6XM 8X15	M22X2	30	50	20	28.5	10	G3/8"			251 24
06 S04	100	6	3330	187	200	85		709	64	6XM 8X15	M22X2	30	50	20	28.5	10	G3/8"			24
06 S04	100	12	3330	187	200	85		787	64	6XM 8X15	M22X2	30	50	20	28.5	10	G3/8"			24
06 S04	100	25	4070	187	200	90	110	843	64	6XM 8X15	M22X2	30	50	20	28.5	10	G3/8"			311 24
06 S04	150	6	3330	187	200	85		855	64	6XM 8X15	M22X2	30	50	20	28.5	10	G3/8"			24
06 S04	150	12	3330	187	200	85		933	64	6XM 8X15	M22X2	30	50	20	28.5	10	G3/8"			24
06 S04	150	25	4070	187	200	90	110	969	64	6XM 8X15	M22X2	30	50	20	28.5	10	G3/8"			411 24
06 S04	150	40	3600	187	200	90	135	926	64	6XM 8X15	M22X2	30	50	20	28.5	10	G3/8"	13		411 24
06 S04	200	6	3330	187	200	85		1001	64	6XM 8X15	M22X2	30	50	20	28.5	10	G3/8"			24
06 S04	200	12	3330	187	200	85		1079	64	6XM 8X15	M22X2	30	50	20	28.5	10	G3/8"			24
06 S04	200	25	4070	187	200	90	110	1095	64	6XM 8X15	M22X2	30	50	20	28.5	10	G3/8"			511 24
06 S04	200	40	3600	187	200	90	135	1042	64	6XM 8X15	M22X2	30	50	20	28.5	10	G3/8"	13		511 24
06 S04	200	50	3600	187	200	90	135	1093	64	6XM 8X15	M22X2	30	50	20	28.5	10	G3/8"	13		511 24
06 S04	250	12	3330	187	200	85		1225	64	6XM 8X15	M22X2	30	50	20	28.5	10	G3/8"			24
06 S04	250	25	4070	187	200	90	110	1221	64	6XM 8X15	M22X2	30	50	20	28.5	10	G3/8"			611 24
06 S04	250	40	3600	187	200	90	135	1158	64	6XM 8X15	M22X2	30	50	20	28.5	10	G3/8"	13		611 24
06 S04	300	60	3600	187	200	90	135	1377	64	6XM 8X15	M22X2	30	50	20	28.5	10	G3/8"	13		711 24
06 S04	400	60	3600	187	200	90	135	1611	64	6XM 8X15	M22X2	30	50	20	28.5	10	G3/8"	13		911 24
06 S05	50	6	7820	324	344	110		651	88	6XM 10X16	M30X2	45	70	25	35	10	G1/2"			36
06 S05	50	12	7820	324	344	110		755	88	6XM 10X16	M30X2	45	70	25	35	10	G1/2"			36
06 S05	50	20	6910	324	344	115	135	731	88	6XM 10X16	M30X2	45	70	25	35	10	G1/2"	13		241 36
06 S05	100	6	7820	324	344	110		801	88	6XM 10X16	M30X2	45	70	25	35	10	G1/2"			36
06 S05	100	12	7820	324	344	110		905	88	6XM 10X16	M30X2	45	70	25	35	10	G1/2"			36
06 S05	100	25	6910	324	344	115	135	912	88	6XM 10X16	M30X2	45	70	25	35	10	G1/2"	13		341 36
06 S05	100	40	7230	324	344	115	170	943	88	6XM 10X16	M30X2	45	70	25	35	10	G1/2"	17		341 36
06 S05	150	6	7820	324	344	110		951	88	6XM 10X16	M30X2	45	70	25	35	10	G1/2"			36
06 S05	150	12	7820	324	344	110		1055	88	6XM 10X16	M30X2	45	70	25	35	10	G1/2"			36
06 S05	150	25	6910	324	344	115	135	1044	88	6XM 10X16	M30X2	45	70	25	35	10	G1/2"	13		441 36
06 S05	150	40	7230	324	344	115	170	1063	88	6XM 10X16	M30X2	45	70	25	35	10	G1/2"	17		441 36
06 S05	200	6	7820	324	344	110		1101	88	6XM 10X16	M30X2	45	70	25	35	10	G1/2"			36
06 S05	200	12	7820	324	344	110		1205	88	6XM 10X16	M30X2	45	70	25	35	10	G1/2"			36
06 S05	200	25	6910	324	344	115	135	1176	88	6XM 10X16	M30X2	45	70	25	35	10	G1/2"	13		541 36
06 S05	200	40	7230	324	344	115	170	1183	88	6XM 10X16	M30X2	45	70	25	35	10	G1/2"	17		541 36
06 S05	200	60	7230	324	344	115	170	1308	88	6XM 10X16	M30X2	45	70	25	35	10	G1/2"	17		541 36
06 S05	250	12	7820	324	344	110		1355	88	6XM 10X16	M30X2	45	70	25	35	10	G1/2"			36
06 S05	250	25	6910	324	344	115	135	1308	88	6XM 10X16	M30X2	45	70	25	35	10	G1/2"	13		641 36
06 S05	250	40	7230	324	344	115	170	1303	88	6XM 10X16	M30X2	45	70	25	35	10	G1/2"	17		641 36
06 S05	300	60	7230	324	344	115	170	1548	88	6XM 10X16	M30X2	45	70	25	35	10	G1/2"	17		741 36
06 S05	400	60	7230	324	344	115	170	1788	88	6XM 10X16	M30X2	45	70	25	35	10	G1/2"	17		941 36



The power is stated $\pm 5\%$

Güç deęişimi $\pm 5\%$

DK OTOMASYON İtd. Şti. Head office: Gazcılar cad. No:62/B 16220 Bursa •TURKEY Tel: +90.224. 444 00 75 Fax: +90.224. 253 06 90

dkPOWER type S 6 bar series, 0.6-100 tons

dkPOWER tip S 6 bar serisi, 0.6-100 ton

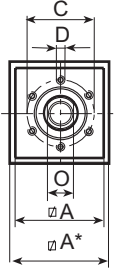
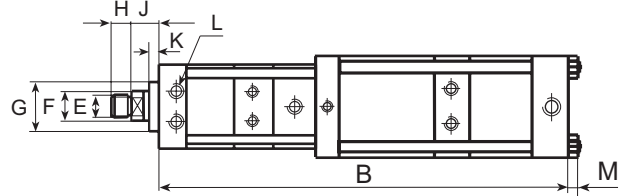
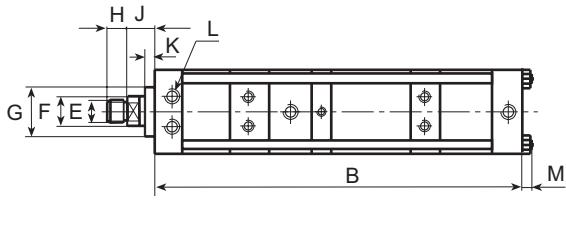


Table general dimensions
Genel ölçü tablosu

Measurements in mm / Ölçüler mm dir

Type Tip	Total Stroke Toplam strok mm	power stroke Güç stroğu mm	max.force max.kuvvet (daN)	fast approach force Hızlı ilerleme stroğu (daN)	retracting force Geri dönüş kuvveti (daN)	A	A*	B	C	D	E	F	G	H	J	K	L	M	N	O
06 S06	50	6	13380	460	565	135		693	100	6XM 16X25	M30X2	50	75	25	36	15	G1/2"	17		41
06 S06	50	12	13380	460	565	135		807	100	6XM 16X25	M30X2	50	75	25	36	15	G1/2"	17		41
06 S06	100	6	13380	460	565	135		855	100	6XM 16X25	M30X2	50	75	25	36	15	G1/2"	17		41
06 S06	100	12	13380	460	565	135		970	100	6XM 16X25	M30X2	50	75	25	36	15	G1/2"	17		41
06 S06	100	25	14000	460	565	140	170	1054	100	6XM 16X25	M30X2	50	75	25	36	15	G1/2"	17	353	41
06 S06	150	6	13380	460	565	135		1018	100	6XM 16X25	M30X2	50	75	25	36	15	G1/2"	17		41
06 S06	150	12	13380	460	565	135		1133	100	6XM 16X25	M30X2	50	75	25	36	15	G1/2"	17		41
06 S06	150	25	14000	460	565	140	170	1194	100	6XM 16X25	M30X2	50	75	25	36	15	G1/2"	17	453	41
06 S06	150	40	13380	460	565	140	200	1269	100	6XM 16X25	M30X2	50	75	25	36	15	G1/2"	17	453	41
06 S06	200	6	13380	460	565	135		1181	100	6XM 16X25	M30X2	50	75	25	36	15	G1/2"	17		41
06 S06	200	12	13380	460	565	135		1269	100	6XM 16X25	M30X2	50	75	25	36	15	G1/2"	17		41
06 S06	200	25	14000	460	565	140	170	1334	100	6XM 16X25	M30X2	50	75	25	36	15	G1/2"	17	553	41
06 S06	200	40	13380	460	565	140	200	1399	100	6XM 16X25	M30X2	50	75	25	36	15	G1/2"	17	553	41
06 S06	250	12	13380	460	565	135		1459	100	6XM 16X25	M30X2	50	75	25	36	15	G1/2"	17		41
06 S06	250	25	14000	460	565	140	170	1474	100	6XM 16X25	M30X2	50	75	25	36	15	G1/2"	17	653	41
06 S06	250	40	13380	460	565	140	200	1529	100	6XM 16X25	M30X2	50	75	25	36	15	G1/2"	17	653	41
06 S06	300	40	13380	460	565	140	200	1659	100	6XM 16X25	M30X2	50	75	25	36	15	G1/2"	17	753	41
06 S07	50	6	28300	675	970	170		803	132	6XM 20X30	M39X2	56	100	35	47	18	G3/4"	23		50
06 S07	100	6	28300	675	970	170		981	132	6XM 20X30	M39X2	56	100	35	47	18	G3/4"	23		50
06 S07	100	12	28300	675	970	170		1131	132	6XM 20X30	M39X2	56	100	35	47	18	G3/4"	23		50
06 S07	100	20	30650	675	970	190	270	998	132	6XM 20X30	M39X2	56	100	35	47	18	G3/4"	17	361	50
06 S07	150	6	28300	675	970	170		1159	132	6XM 20X30	M39X2	56	100	35	47	18	G3/4"	23		50
06 S07	150	12	28300	675	97	170		1309	132	6XM 20X30	M39X2	56	100	35	47	18	G3/4"	23		50
06 S07	150	25	30650	675	09	190	270	1185	132	6XM 20X30	M39X2	56	100	35	47	18	G3/4"	17	461	50
06 S07	200	6	28300	675	70	170		1337	132	6XM 20X30	M39X2	56	100	35	47	18	G3/4"	23		50
06 S07	200	12	28300	675	970	170		1487	132	6XM 20X30	M39X2	56	100	35	47	18	G3/4"	23		50
06 S07	200	25	30650	675	970	190	270	1317	132	6XM 20X30	M39X2	56	100	35	47	18	G3/4"	17	561	50
06 S07	200	35	30650	675	970	190	270	1428	132	6XM 20X30	M39X2	56	100	35	47	18	G3/4"	17	561	50
06 S07	250	12	28300	675	970	170		1665	132	6XM 20X30	M39X2	56	100	35	47	18	G3/4"	23		50
06 S07	300	25	30650	675	970	190	270	1581	132	6XM 20X30	M39X2	56	100	35	47	18	G3/4"	17	761	50
06 S07	300	40	30650	675	970	190	270	1748	132	6XM 20X30	M39X2	56	100	35	47	18	G3/4"	17	761	50
06 S07	400	40	30650	675	970	190	270	2012	132	6XM 20X30	M39X2	56	100	35	47	18	G3/4"	17	961	50



The power is stated $\pm 5\%$

Güç değişimi $\pm 5\%$

DK OTOMASYON İtD. Şti. Head office: Gazcılar cad. No:62/B 16220 Bursa •TURKEY Tel: +90.224. 444 00 75 Fax: +90.224. 253 06 90

dkPOWER type S 6 bar series, 0.6-100 tons

dkPOWER tip S 6 bar serisi, 0.6-100 ton

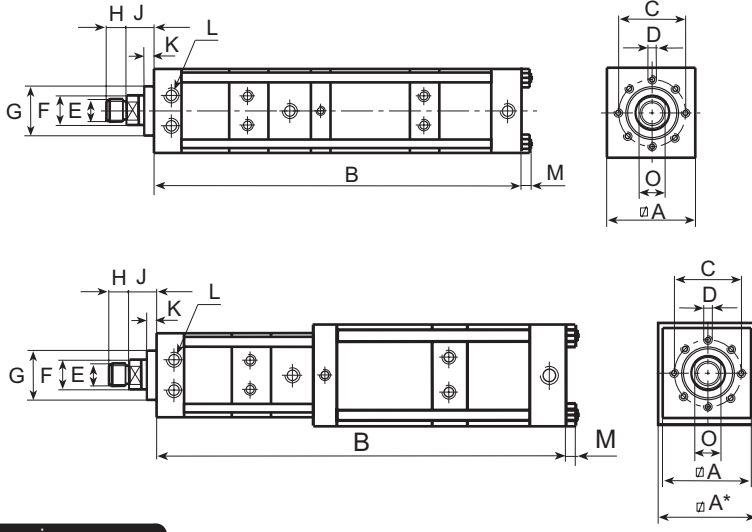


Table general dimensions
Genel ölçü tablosu

Measurements in mm / Ölçüler mm dir

Type	Total Stroke	power stroke	max.force	fast approach force	retracting force															
Tip	Toplam strok	Güç stroğu	max.kuvvet	Hızlı ilerleme stroğu	Geri dönüş kuvveti	A	A*	B	C	D	E	F	G	H	J	K	L	M	N	O
	mm	mm	(daN)	(daN)	(daN)															
06 S08	70	6	45900	725	1225	200		957	150	8XM 20X30	M42X2	63	115	40	52	25	G3/4"	31		55
06 S08	100	6	45900	725	1225	200		1075	150	8XM 20X30	M42X2	63	115	40	52	25	G3/4"	31		55
06 S08	100	12	47600	725	1225	220	270	1026	150	8XM 20X30	M42X2	63	115	40	52	25	G3/4"	17	367	55
06 S08	150	6	45900	725	1225	200		1271	150	8XM 20X30	M42X2	63	115	40	52	25	G3/4"	31		55
06 S08	200	10	45900	725	1225	200		1597	150	8XM 20X30	M42X2	63	115	40	52	25	G3/4"	31		55
06 S08	200	20	47600	725	1225	220	270	1465	150	8XM 20X30	M42X2	63	115	40	52	25	G3/4"	17	567	55
06 S08	250	10	45900	725	1225	200		1793	150	8XM 20X30	M42X2	63	115	40	52	25	G3/4"	31		55
06 S08	300	20	47600	725	1225	220	270	1765	150	8XM 20X30	M42X2	63	115	40	52	25	G3/4"	17	767	55
06 S08	300	30	47600	725	1225	220	325	1693	150	8XM 20X30	M42X2	63	115	40	52	25	G3/4"	21	767	55
06 S08	400	40	47600	725	1225	220	325	2084	150	8XM 20X30	M42X2	63	115	40	52	25	G3/4"	21	967	55

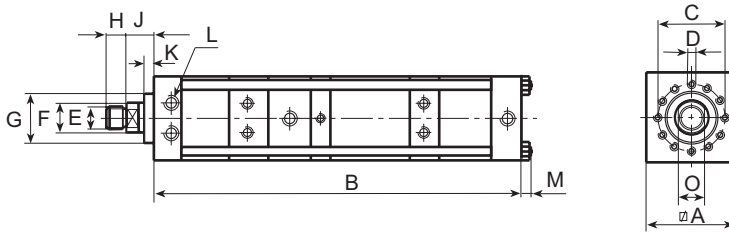


Table general dimensions
Genel ölçü tablosu

Measurements in mm / Ölçüler mm dir

Type	Total Stroke	power stroke	max.force	fast approach force	retracting force															
Tip	Toplam strok	Güç stroğu	max.kuvvet	Hızlı ilerleme stroğu	Geri dönüş kuvveti	A	A*	B	C	D	E	F	G	H	J	K	L	M	N	O
	mm	mm	(daN)	(daN)	(daN)															
06 S09	100	10	72700	1300	2250	325		1329	200	12XM 24X40	M64X2	100	150	60	60	25	G 1"	31		85
06 S09	150	10	72700	1300	2250	325		1533	200	12XM 24X40	M64X2	100	150	60	60	25	G 1"	31		85
06 S09	200	13	72700	1300	2250	325		1809	200	12XM 24X40	M64X2	100	150	60	60	25	G 1"	31		85
06 S09	250	12	72700	1300	2250	325		2013	200	12XM 24X40	M64X2	100	150	60	60	25	G 1"	31		85
06 S09	300	16	72700	1300	2250	325		2288	200	12XM 24X40	M64X2	100	150	60	60	25	G 1"	31		85
06 S10	100	8	98500	1300	2250	325		1329	200	12XM 24X40	M64X2	100	150	60	60	25	G 1"	31		85
06 S10	150	8	98500	1300	2250	325		1533	200	12XM 24X40	M64X2	100	150	60	60	25	G 1"	31		85
06 S10	200	10	98500	1300	2250	325		1809	200	12XM 24X40	M64X2	100	150	60	60	25	G 1"	31		85
06 S10	250	10	98500	1300	2250	325		2013	200	12XM 24X40	M64X2	100	150	60	60	25	G 1"	31		85
06 S10	300	12	98500	1300	2250	325		2288	200	12XM 24X40	M64X2	100	150	60	60	25	G 1"	31		85



The power is stated \pm 5%

Güç değişimi \pm 5%

DK OTOMASYON Ltd. Şti. Head office: Gazlılar cad. No:62/B 16220 Bursa •TURKEY Tel: +90.224. 444 00 75 Fax: +90.224. 253 06 90