

dkPOWER type SK 10 bar series, 0.7-50 tons

dkPOWER tip SK 10 bar serisi, 0.7-50 ton

type SK

Total strokes
Power strokes
Force
Operating pressure
Special execution

typ SK

Toplam strok : 50-400mm
Güç stroğu : 5-40mm
Kuvvet : 0.7-50 ton
Operasyon basıncı : 2-10 bar
Özel uygulama basıncı : Full forced reached with 10 bar operating pressure
Max güce 10 bar'lık hava basıncında ulaşır
Possible Mümkün

Power stroke limitation (optional) Güç stroğu kısıtlaması (opsiyonel)

Sample order / Sipariş örneği

10 SK01 - 100 - 10

Power stroke
Total stroke
Type
Max. working pressure

Güç stroğu
Toplam strok
Tip
Max. çalışma basıncı

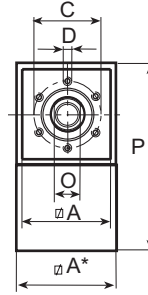
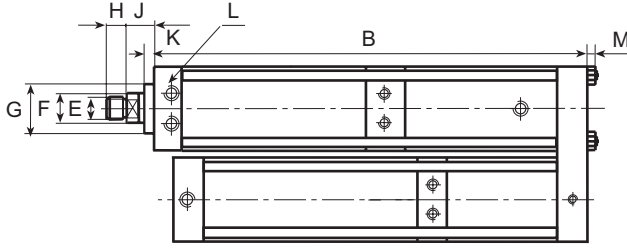


Table general dimensions
Genel ölçü tablosu

Measurements in mm / Ölçüler mm dir

Type Tip	Total Stroke Toplam strok mm	power stroke Güç stroğu mm	max.force max.kuvvet (daN)	fast approach force Hızlı ilerleme stroğu (daN)	retracting force Geni dönüş kuvveti (daN)	A	A*	B	C	D	E	F	G	H	J	K	L	M	P	O	R
10 SK01	100	5	700	95	100	50		331	40	6XM 6X12	M12X1.5	16	30	12	24	10	G1/8"	7	105	14	
10 SK01	100	10	700	95	100	50	60	321	40	6XM 6X12	M12X1.5	16	30	12	24	10	G1/8"	7	115	14	
10 SK01	100	20	1050	95	100	50	70	326	40	6XM 6X12	M12X1.5	16	30	12	24	10	G1/8"	7	125	14	
10 SK01	150	5	700	95	100	50		431	40	6XM 6X12	M12X1.5	16	30	12	24	10	G1/8"	7	105	14	
10 SK01	150	11	700	95	100	50	60	421	40	6XM 6X12	M12X1.5	16	30	12	24	10	G1/8"	7	115	14	
10 SK01	150	20	1050	95	100	50	70	421	40	6XM 6X12	M12X1.5	16	30	12	24	10	G1/8"	7	125	14	
10 SK02	100	5	1210	144	167	60		359	40	6XM 6X12	M12X1.5	16	30	12	24	10	G1/8"	9	125	14	
10 SK02	100	10	1325	144	167	60	70	347	40	6XM 6X12	M12X1.5	16	30	12	24	10	G1/8"	9	134	14	
10 SK02	100	14	1210	144	167	60	85	348	40	6XM 6X12	M12X1.5	16	30	12	24	10	G1/8"	9	150	14	
10 SK02	150	5	1210	144	167	60		442	40	6XM 6X12	M12X1.5	16	30	12	24	10	G1/8"	9	125	14	
10 SK02	150	11	1325	144	167	60	70	442	40	6XM 6X12	M12X1.5	16	30	12	24	10	G1/8"	9	134	14	
10 SK02	150	20	1210	144	167	60	85	442	40	6XM 6X12	M12X1.5	16	30	12	24	10	G1/8"	9	150	14	
10 SK03	100	8	2100	250	265	70		369	54	6XM 8X12	M16X1.5	20	40	15	26	10	G1/4"	9	145	17	
10 SK03	100	12	2070	250	265	70	85	384	54	6XM 8X12	M16X1.5	20	40	15	26	10	G1/4"	9	160	17	
10 SK03	100	20	2070	250	265	70	110	378	54	6XM 8X12	M16X1.5	20	40	15	26	10	G1/4"	9	185	17	
10 SK03	150	8	2100	250	265	70		449	54	6XM 8X12	M16X1.5	20	40	15	26	10	G1/4"	9	145	17	
10 SK03	150	12	2070	250	265	70	85	449	54	6XM 8X12	M16X1.5	20	40	15	26	10	G1/4"	9	160	17	
10 SK03	150	20	2070	250	265	70	110	449	54	6XM 8X12	M16X1.5	20	40	15	26	10	G1/4"	9	185	17	
10 SK03	200	8	2100	250	265	70		549	54	6XM 8X12	M16X1.5	20	40	15	26	10	G1/4"	9	145	17	
10 SK03	200	12	2070	250	265	70	85	549	54	6XM 8X12	M16X1.5	20	40	15	26	10	G1/4"	9	160	17	
10 SK03	200	20	2070	250	265	70	110	549	54	6XM 8X12	M16X1.5	20	40	15	26	10	G1/4"	9	185	17	
10 SK04	100	5	4100	320	340	85		419	64	6XM 8X15	M22X2	30	50	20	28.5	10	G3/8"	11	175	24	
10 SK04	100	10	4100	320	340	85	110	412	64	6XM 8X15	M22X2	30	50	20	28.5	10	G3/8"	11	200	24	
10 SK04	100	20	4100	320	340	85	135	429	64	6XM 8X15	M22X2	30	50	20	28.5	10	G3/8"	11	225	24	
10 SK04	150	5	4100	320	340	85		465	64	6XM 8X15	M22X2	30	50	20	28.5	10	G3/8"	11	175	24	
10 SK04	150	10	4100	320	340	85	110	460	64	6XM 8X15	M22X2	30	50	20	28.5	10	G3/8"	11	200	24	

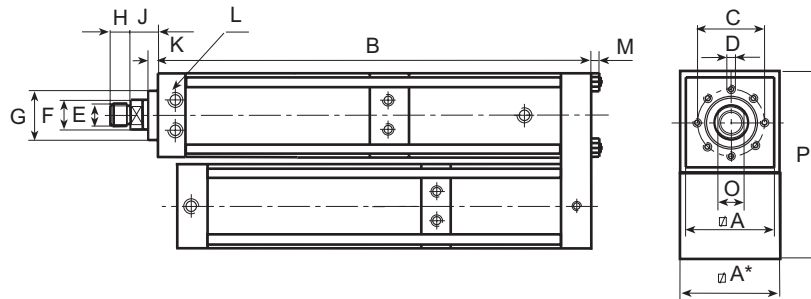
dkPOWER type SK 10 bar series, 0.7-50 tons

dkPOWER tip SK 10 bar serisi, 0.7-50 ton

Table general dimensions
Genel ölçü tablosu

Measurements in mm / Ölçüler mm dir

Type Tip	Total Stroke Toplam strok mm	power stroke Güç stroğu mm	max.force max.kuvvet (daN)	fast approach force Hızlı ilerleme stroğu (daN)	retracting force Geri dönüş kuvveti (daN)	A	A*	B	C	D	E	F	G	H	J	K	L	M	P	O	R
10 SK04	150	20	4100	320	340	85	135	460	64	6XM 8X15	M22X2	30	50	20	28.5	10	G3/8"	11	225	24	
10 SK04	200	5	4100	320	340	85		560	64	6XM 8X15	M22X2	30	50	20	28.5	10	G3/8"	11	175	24	
10 SK04	200	10	4100	320	340	85	110	560	64	6XM 8X15	M22X2	30	50	20	28.5	10	G3/8"	11	200	24	
10 SK04	200	20	4100	320	340	85	135	560	64	6XM 8X15	M22X2	30	50	20	28.5	10	G3/8"	11	225	24	
10 SK05	100	5	7840	560	595	110		467	88	6XM 10X16	M30X2	45	70	25	35	10	G1/2"	13	225	36	
10 SK05	100	10	7840	560	595	110	135	467	88	6XM 10X16	M30X2	45	70	25	35	10	G1/2"	13	250	36	
10 SK05	100	20	8200	560	595	110	170	520	88	6XM 10X16	M30X2	45	70	25	35	10	G1/2"	13	285	36	
10 SK05	150	5	7840	560	595	110		517	88	6XM 10X16	M30X2	45	70	25	35	10	G1/2"	13	225	36	
10 SK05	150	10	7840	560	595	110	135	499	88	6XM 10X16	M30X2	45	70	25	35	10	G1/2"	13	250	36	
10 SK05	150	20	8200	560	595	110	170	540	88	6XM 10X16	M30X2	45	70	25	35	10	G1/2"	13	285	36	
10 SK05	200	5	7840	560	595	110		599	88	6XM 10X16	M30X2	45	70	25	35	10	G1/2"	13	225	36	
10 SK05	200	10	7840	560	595	110	135	599	88	6XM 10X16	M30X2	45	70	25	35	10	G1/2"	13	250	36	
10 SK05	200	20	8200	560	595	110	170	599	88	6XM 10X16	M30X2	45	70	25	35	10	G1/2"	13	285	36	
10 SK05	250	10	7840	560	595	110	135	699	88	6XM 10X16	M30X2	45	70	25	35	10	G1/2"	13	250	36	
10 SK05	250	20	8200	560	595	110	170	699	88	6XM 10X16	M30X2	45	70	25	35	10	G1/2"	13	285	36	
10 SK06	100	5	15000	800	975	135		522	100	6XM 16X25	M30X2	50	75	25	36	15	G1/2"	17	275	41	
10 SK06	100	10	15750	800	975	135	170	557	100	6XM 16X25	M30X2	50	75	25	36	15	G1/2"	17	310	41	
10 SK06	100	20	15000	800	975	135	200	496	100	6XM 16X25	M30X2	50	75	25	36	15	G1/2"	17	336	41	
10 SK06	150	5	15000	800	975	135		585	100	6XM 16X25	M30X2	50	75	25	36	15	G1/2"	17	275	41	
10 SK06	150	10	15750	800	975	135	170	596	100	6XM 16X25	M30X2	50	75	25	36	15	G1/2"	17	310	41	
10 SK06	150	20	15000	800	975	135	200	521	100	6XM 16X25	M30X2	50	75	25	36	15	G1/2"	17	336	41	
10 SK06	200	5	15000	800	975	135		648	100	6XM 16X25	M30X2	50	75	25	36	15	G1/2"	17	275	41	
10 SK06	200	10	15750	800	975	135	170	636	100	6XM 16X25	M30X2	50	75	25	36	15	G1/2"	17	310	41	
10 SK06	200	20	15000	800	975	135	200	621	100	6XM 16X25	M30X2	50	75	25	36	15	G1/2"	17	336	41	
10 SK06	250	5	15000	800	975	135		721	100	6XM 16X25	M30X2	50	75	25	36	15	G1/2"	17	275	41	
10 SK06	250	10	15750	800	975	135	170	721	100	6XM 16X25	M30X2	50	75	25	36	15	G1/2"	17	310	41	
10 SK06	250	20	15000	800	975	135	200	721	100	6XM 16X25	M30X2	50	75	25	36	15	G1/2"	17	336	41	
10 SK07	100	10	30250	1150	1675	170	270	584	132	6XM 20X30	M39X2	56	100	35	47	18	G3/4"	21	446	50	
10 SK07	150	10	30250	1150	1675	170	270	596	132	6XM 20X30	M39X2	56	100	35	47	18	G3/4"	21	446	50	
10 SK07	150	20	30250	1150	1675	170	270	658	132	6XM 20X30	M39X2	56	100	35	47	18	G3/4"	21	446	50	53
10 SK07	200	10	30250	1150	1675	170	270	639	132	6XM 20X30	M39X2	56	100	35	47	18	G3/4"	21	446	50	
10 SK07	200	20	30250	1150	1675	170	270	690	132	6XM 20X30	M39X2	56	100	35	47	18	G3/4"	21	446	50	53
10 SK07	300	20	30250	1150	1675	170	270	839	132	6XM 20X30	M39X2	56	100	35	47	18	G3/4"	21	446	50	53
10 SK07	400	20	30250	1150	1675	170	270	1039	132	6XM 20X30	M39X2	56	100	35	47	18	G3/4"	21	446	50	53



Measurements in mm / Ölçüler mm dir

Table general dimensions
Genel ölçü tablosu

Type Tip	Total Stroke Toplam strok mm	power stroke Güç stroğu mm	max.force max.kuvvet (daN)	fast approach force Hızlı ilerleme stroğu (daN)	retracting force Geri dönüş kuvveti (daN)	A	A*	B	C	D	E	F	G	H	J	K	L	M	P	O	R
10 SK08	100	10	46800	1250	2120	200	270	665	150	8XM 20X30	M42X2	63	115	40	52	25	G3/4"	23	476	55	
10 SK08	100	20	46800	1250	2120	200	325	709	150	8XM 20X30	M42X2	63	115	40	52	25	G3/4"	23	534	55	42
10 SK08	200	10	46800	1250	2120	200	270	765	150	8XM 20X30	M42X2	63	115	40	52	25	G3/4"	23	476	55	
10 SK08	200	20	46800	1250	2120	200	325	779	150	8XM 20X30	M42X2	63	115	40	52	25	G3/4"	23	534	55	42
10 SK08	300	10	46800	1250	2120	200	270	865	150	8XM 20X30	M42X2	63	115	40	52	25	G3/4"	23	476	55	
10 SK08	300	20	46800	1250	2120	200	325	865	150	8XM 20X30	M42X2	63	115	40	52	25	G3/4"	23	534	55	42



The power is stated $\pm 5\%$

Güç değişimi $\pm 5\%$

DK OTOMASYON İTİ. ŞTİ. Head office: Gazıcılar cad. No:62/B 16220 Bursa •TURKEY Tel: +90.224. 444 00 75 Fax: +90.224. 253 06 90